

Welcome to



Located on the Chattahoochee River, Bibb City is a mill village in Columbus, Georgia. Both the mill and its village opened its doors for business in 1902. Two things make the Bibb City unique. First, is the fatherly eye the Bibb Mill kept on village residents for 60 years, including renting its 260 homes. The city was its own municipality surrounded completely by the city of Columbus for over 90 years (2000 saw the dissolution of the town). Second was and the way the community was designed. There were two phases of development in Bibb City, what residents used to call the Old Village and the New Village. As the map attached reveals, the road layout differs from one end of the town to the other. The Old Village is located around the mill in the southern section of Bibb City. Old Village roads are laid out on a grid and houses sit side-by-side, close together. In contrast, northern Bibb City roads are curved and the homes are laid out following those curves. Streets loop back into each other and do not connect with the major Columbus streets. Little has changed in the community's housing or its layout in 80 years. As we explore we will see that there are other differences between the Old and New villages. To begin, start at the Rivermill Event Center located at 3715 1st Avenue in Columbus. The tour should take you approximately 30 minutes, and is fairly easy with some hills and a small flight of steps.



A. Let's begin at the corner of Porter and Hansen. From here, you can see a clear view of the water tower towards the East (#2 on map's points of interest, or POI), as well as see a great example of the newer housing. These 4 room houses were used to board workers. Two families lived in each house as you can see by the 2 front doors. Workers and families took great pride in Bibb City and strived to keep the village nice. The mill owners sponsored clean up days to keep the town tidy and kept a critical eye on residents' gardens.

B. As you continue South on Hansen Avenue, at the corner where you intersect 40th Street, you find your next stop. From here, North you can see the Bibb City Elementary School (POI # 6). The school was the center of the city life for years, until the auditorium was later built. To your left from this corner, you can see the Porter Baptist Church (POI # 5). Unlike most mill towns, Bibb did not force religion on their workers. However, it was greatly encouraged.



How the Porter Memorial Baptist Church of Bibb City Will Look

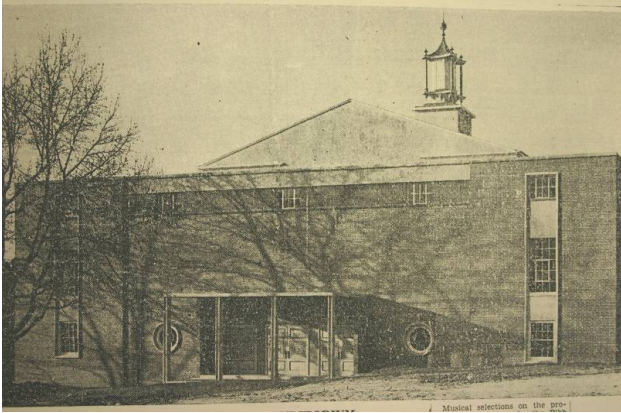


Bibb City's fine swim pool is a busy place this summer, and the camera snapped a small group during a short hill in a recent morning session. One youngster is in the air at the start of a dive, (at the bottom corner of the right-hand window), and he made a good one.

C. Continuing on, follow 40th Street around Eastward. This was the site of both the community swimming pool and the former community center that also functioned as the town's clinic. (POI # 7). You can also look South down Park Ave and see a view of the 10 room boarding houses, which were part of the Old Village's housing for both families and single boarders. Originally there were 24 of these houses, but today many have been destroyed.



D. Continuing down 40th Street, you will come upon the site of the former Boy Scout Hut (POI # 8). The original building was torn down by a storm in 1953, but was rebuilt by April of 1954. The house that you see now was built in 2008. If you look beyond the house, you can see the Chattahoochee River.



E. Follow Poplar Street around, making a slight right and going around the Bibb Triangle. As you round this corner, stop to check out the Hemlock Drive Park (POI #10) to the North, or on your left. From here, you have a great overview of the park. Unlike the Old Village, the New Village included parks and winding streets, providing a more rural sense. If you look North up Hemlock Drive, there is much more green space, wide grass medians between the street and the sidewalk.

F. As you approach the corner of 41st Street and Hemlock, you will see the Comer Auditorium (POI # 9). This building was built in July 1941 as a community center. One of the Comer's roles was to host the basketball tournaments for the village. Look up and you'll notice that this is a cupola that sits on top of this building. *Note: Between this point and the final point, you will encounter a small flight of stairs.*

G. Following Hemlock Drive up, you will notice the housing is closer together. This is considered part of the old village. The Bibb village took pride in keeping their homes clean and kept up.

H. Our final stop on the tour is at the end of Corner Street, which includes a view of the former Bibb Mill (POI #3). Built in 1902, the mill ran over 1000 feet long. Bibb City was built to house Bibb workers. All the memories that developed in its shadow for the last century surfaced in a fire in November 2008. Hundreds of people came to watch the mill they spent their whole lives working in burn to the ground. The only part of the long building left is the façade and it remains a reminder of the importance of cotton mill life in Bibb City.

