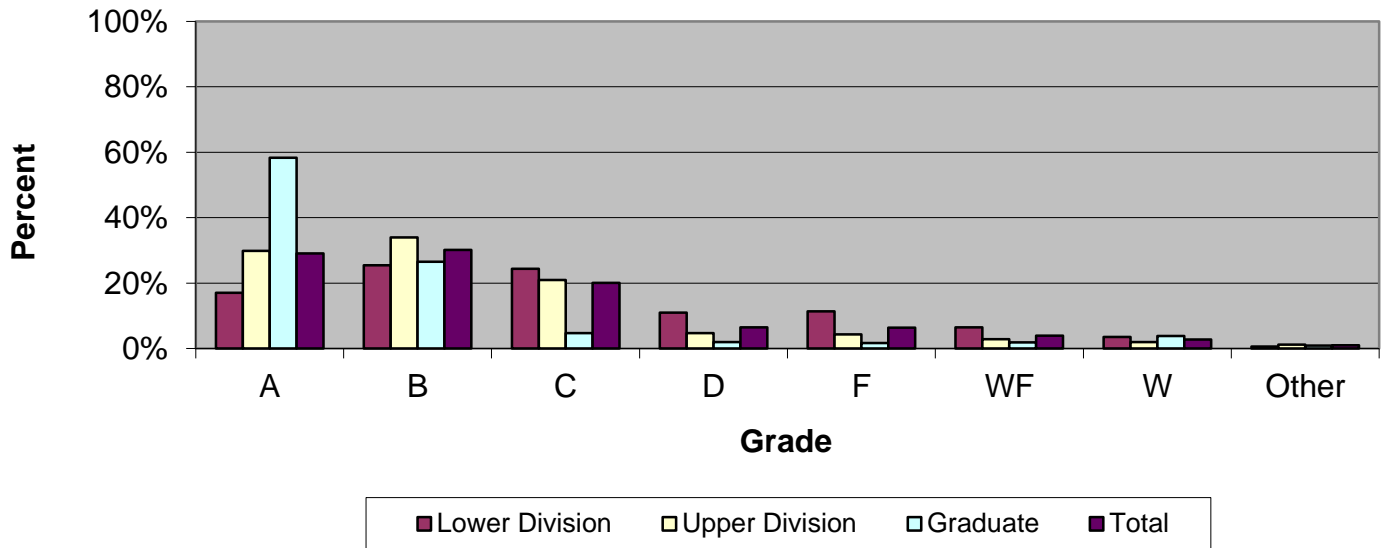


CSU Facts & Figures 2013: Grade Distribution

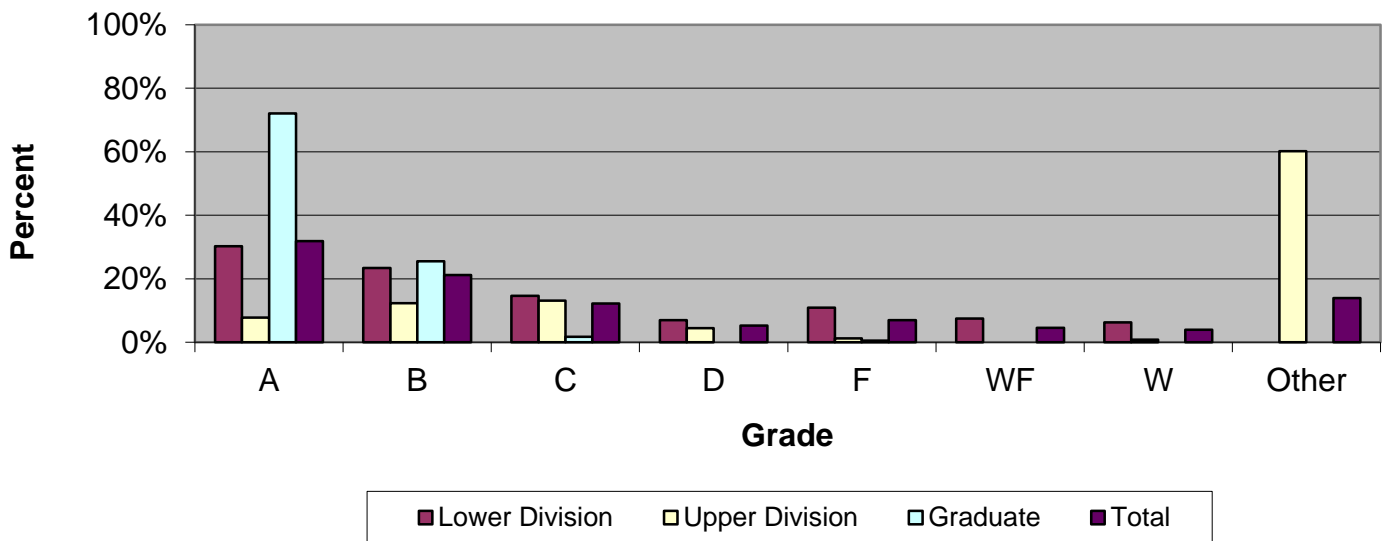
Grade Distribution of Full-Time Faculty for 2012-13 Turner College of Business & Computer Science



Grade Distribution by Level of Instruction - Turner College of Business & Computer Science

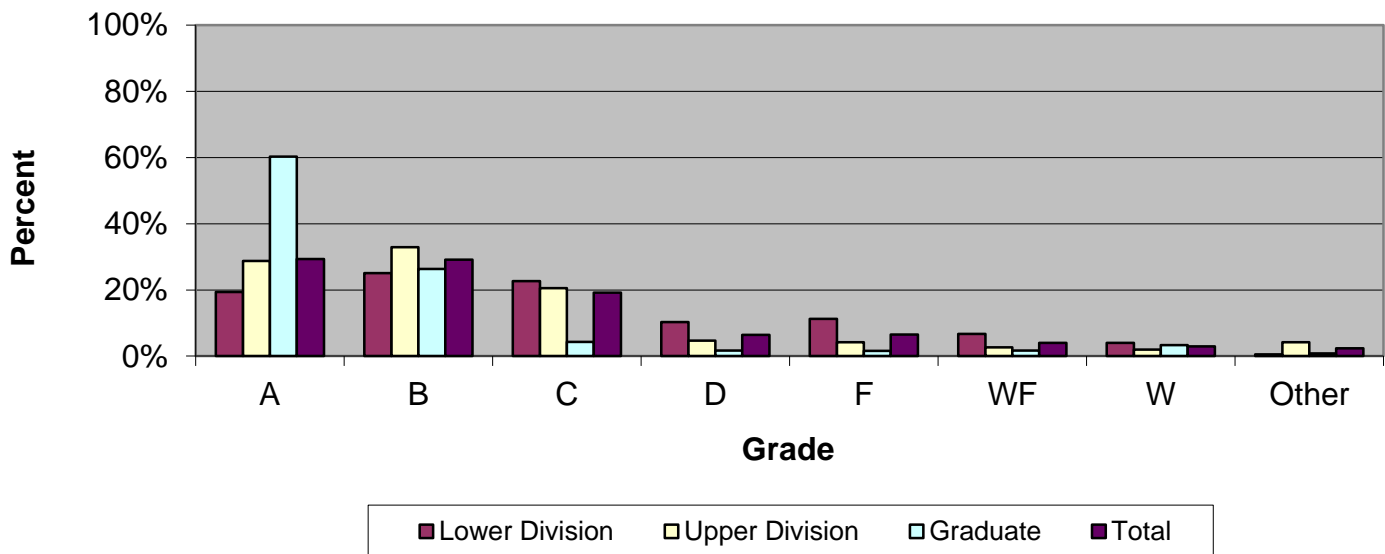
Full-Time Faculty	A's	B's	C's	D's	F's	WF's	W's	Other	Total
<i>2009-2010</i>									
Lower Division	669	808	801	401	318	229	199	12	3,437
Percent	19.5%	23.5%	23.3%	11.7%	9.3%	6.7%	5.8%	0.3%	100.0%
Upper Division	1,428	1,736	1,171	275	200	111	144	108	5,173
Percent	27.6%	33.6%	22.6%	5.3%	3.9%	2.1%	2.8%	2.1%	100.0%
Graduate	394	254	37	9	8	29	46	11	788
Percent	50.0%	32.2%	4.7%	1.1%	1.0%	3.7%	5.8%	1.4%	100.0%
Total	2,491	2,798	2,009	685	526	369	389	131	9,398
Percent	26.5%	29.8%	21.4%	7.3%	5.6%	3.9%	4.1%	1.4%	100.0%
<i>2010-11</i>									
Lower Division	600	804	791	433	449	249	149	20	3,495
Percent	17.2%	23.0%	22.6%	12.4%	12.8%	7.1%	4.3%	0.6%	100.0%
Upper Division	1,385	1,721	984	212	213	105	132	262	5,014
Percent	27.6%	34.3%	19.6%	4.2%	4.2%	2.1%	2.6%	5.2%	100.0%
Graduate	477	252	40	7	10	31	30	7	854
Percent	55.9%	29.5%	4.7%	0.8%	1.2%	3.6%	3.5%	0.8%	100.0%
Total	2,462	2,777	1,815	652	672	385	311	289	9,363
Percent	26.3%	29.7%	19.4%	7.0%	7.2%	4.1%	3.3%	3.1%	100.0%
<i>2011-2012</i>									
Lower Division	633	752	750	333	359	182	96	9	3,114
Percent	20.3%	24.1%	24.1%	10.7%	11.5%	5.8%	3.1%	0.3%	100.0%
Upper Division	1,149	1,478	1,002	237	258	109	119	48	4,400
Percent	26.1%	33.6%	22.8%	5.4%	5.9%	2.5%	2.7%	1.1%	100.0%
Graduate	488	301	37	3	6	20	36	8	899
Percent	54.3%	33.5%	4.1%	0.3%	0.7%	2.2%	4.0%	0.9%	100.0%
Total	2,270	2,531	1,789	573	623	311	251	65	8,413
Percent	27.0%	30.1%	21.3%	6.8%	7.4%	3.7%	3.0%	0.8%	100.0%
<i>2012-2013</i>									
Lower Division	504	754	722	327	336	193	106	20	2,962
Percent	17.0%	25.5%	24.4%	11.0%	11.3%	6.5%	3.6%	0.7%	100.0%
Upper Division	1,369	1,561	962	217	201	130	93	55	4,588
Percent	29.8%	34.0%	21.0%	4.7%	4.4%	2.8%	2.0%	1.2%	100.0%
Graduate	641	291	52	22	19	21	42	10	1,098
Percent	58.4%	26.5%	4.7%	2.0%	1.7%	1.9%	3.8%	0.9%	100.0%
Total	2,514	2,606	1,736	566	556	344	241	85	8,648
Percent	29.1%	30.1%	20.1%	6.5%	6.4%	4.0%	2.8%	1.0%	100.0%

Grade Distribution of Part-Time Faculty for 2012-13
Turner College of Business & Computer Science



Grade Distribution by Level of Instruction - D. A. Turner College of Business & Computer Science									
Part-Time Faculty	A's	B's	C's	D's	F's	WF's	W's	Other	Total
<i>2009-2010</i>									
Lower Division	95	98	66	37	32	23	26	1	378
Percent	25.1%	25.9%	17.5%	9.8%	8.5%	6.1%	6.9%	0.3%	100.0%
Upper Division	21	20	6	0	0	2	2	0	51
Percent	41.2%	39.2%	11.8%	0.0%	0.0%	3.9%	3.9%	0.0%	100.0%
Graduate	28	1	0	0	0	0	1	0	30
Percent	93.3%	3.3%	0.0%	0.0%	0.0%	0.0%	3.3%	0.0%	100.0%
Total	144	119	72	37	32	25	29	1	459
Percent	31.4%	25.9%	15.7%	8.1%	7.0%	5.4%	6.3%	0.2%	100.0%
<i>2010-2011</i>									
Lower Division	151	166	155	83	95	52	49	2	753
Percent	20.1%	22.0%	20.6%	11.0%	12.6%	6.9%	6.5%	0.3%	100.0%
Upper Division	8	20	12	2	2	1	4	0	49
Percent	16.3%	40.8%	24.5%	4.1%	4.1%	2.0%	8.2%	0.0%	100.0%
Graduate	7	4	1	0	0	0	0	0	12
Percent	58.3%	33.3%	8.3%	0.0%	0.0%	0.0%	0.0%	0.0%	100.0%
Total	166	190	168	85	97	53	53	2	814
Percent	20.4%	23.3%	20.6%	10.4%	11.9%	6.5%	6.5%	0.2%	100.0%
<i>2011-2012</i>									
Lower Division	196	201	152	75	72	60	40	8	804
Percent	24.4%	25.0%	18.9%	9.3%	9.0%	7.5%	5.0%	1.0%	100.0%
Upper Division	28	36	12	1	3	1	1	162	244
Percent	11.5%	14.8%	4.9%	0.4%	1.2%	0.4%	0.4%	66.4%	100.0%
Graduate	114	52	8	2	3	2	2	2	185
Percent	61.6%	28.1%	4.3%	1.1%	1.6%	1.1%	1.1%	1.1%	100.0%
Total	338	289	172	78	78	63	43	172	1,233
Percent	27.4%	23.4%	13.9%	6.3%	6.3%	5.1%	3.5%	13.9%	100.0%
<i>2012-13</i>									
Lower Division	194	150	94	45	70	48	40	0	641
Percent	30.3%	23.4%	14.7%	7.0%	10.9%	7.5%	6.2%	0.0%	100.0%
Upper Division	19	30	32	11	3	0	2	147	244
Percent	7.8%	12.3%	13.1%	4.5%	1.2%	0.0%	0.8%	60.2%	100.0%
Graduate	124	44	3	0	1	0	0	0	172
Percent	72.1%	25.6%	1.7%	0.0%	0.6%	0.0%	0.0%	0.0%	100.0%
Total	337	224	129	56	74	48	42	147	1,057
Percent	31.9%	21.2%	12.2%	5.3%	7.0%	4.5%	4.0%	13.9%	100.0%

Grade Distribution of All Faculty for 2012-13
Turner College of Business & Computer Science



Grade Distribution by Level of Instruction - D. A. Turner College of Business & Computer Science									
All Faculty	A's	B's	C's	D's	F's	WF's	W's	Other	Total
<i>2009-2010</i>									
Lower Division	764	906	867	438	350	252	225	13	3,815
Percent	20.0%	23.7%	22.7%	11.5%	9.2%	6.6%	5.9%	0.3%	100.0%
Upper Division	1,449	1,756	1,177	275	200	113	146	108	5,224
Percent	27.7%	33.6%	22.5%	5.3%	3.8%	2.2%	2.8%	2.1%	100.0%
Graduate	422	255	37	9	8	29	47	11	818
Percent	51.6%	31.2%	4.5%	1.1%	1.0%	3.5%	5.7%	1.3%	100.0%
Total	2,635	2,917	2,081	722	558	394	418	132	9,857
Percent	26.7%	29.6%	21.1%	7.3%	5.7%	4.0%	4.2%	1.3%	100.0%
<i>2010-2011</i>									
Lower Division	751	970	946	516	544	301	198	22	4,248
Percent	17.7%	22.8%	22.3%	12.1%	12.8%	7.1%	4.7%	0.5%	100.0%
Upper Division	1,393	1,741	996	214	215	106	136	262	5,063
Percent	27.5%	34.4%	19.7%	4.2%	4.2%	2.1%	2.7%	5.2%	100.0%
Graduate	484	256	41	7	10	31	30	7	866
Percent	55.9%	29.6%	4.7%	0.8%	1.2%	3.6%	3.5%	0.8%	100.0%
Total	2,628	2,967	1,983	737	769	438	364	291	10,177
Percent	25.8%	29.2%	19.5%	7.2%	7.6%	4.3%	3.6%	2.9%	100.0%
<i>2011-2012</i>									
Lower Division	829	953	902	408	431	242	136	17	3,918
Percent	21.2%	24.3%	23.0%	10.4%	11.0%	6.2%	3.5%	0.4%	100.0%
Upper Division	1,177	1,514	1,014	238	261	110	120	210	4,644
Percent	25.3%	32.6%	21.8%	5.1%	5.6%	2.4%	2.6%	4.5%	100.0%
Graduate	602	353	45	5	9	22	38	10	1,084
Percent	55.5%	32.6%	4.2%	0.5%	0.8%	2.0%	3.5%	0.9%	100.0%
Total	2,608	2,820	1,961	651	701	374	294	237	9,646
Percent	27.0%	29.2%	20.3%	6.7%	7.3%	3.9%	3.0%	2.5%	100.0%
<i>2012-2013</i>									
Lower Division	698	904	816	372	406	241	146	20	3,603
Percent	19.4%	25.1%	22.6%	10.3%	11.3%	6.7%	4.1%	0.6%	100.0%
Upper Division	1,388	1,591	994	228	204	130	95	202	4,832
Percent	28.7%	32.9%	20.6%	4.7%	4.2%	2.7%	2.0%	4.2%	100.0%
Graduate	765	335	55	22	20	21	42	10	1,270
Percent	60.2%	26.4%	4.3%	1.7%	1.6%	1.7%	3.3%	0.8%	100.0%
Total	2,851	2,830	1,865	622	630	392	283	232	9,705
Percent	29.4%	29.2%	19.2%	6.4%	6.5%	4.0%	2.9%	2.4%	100.0%