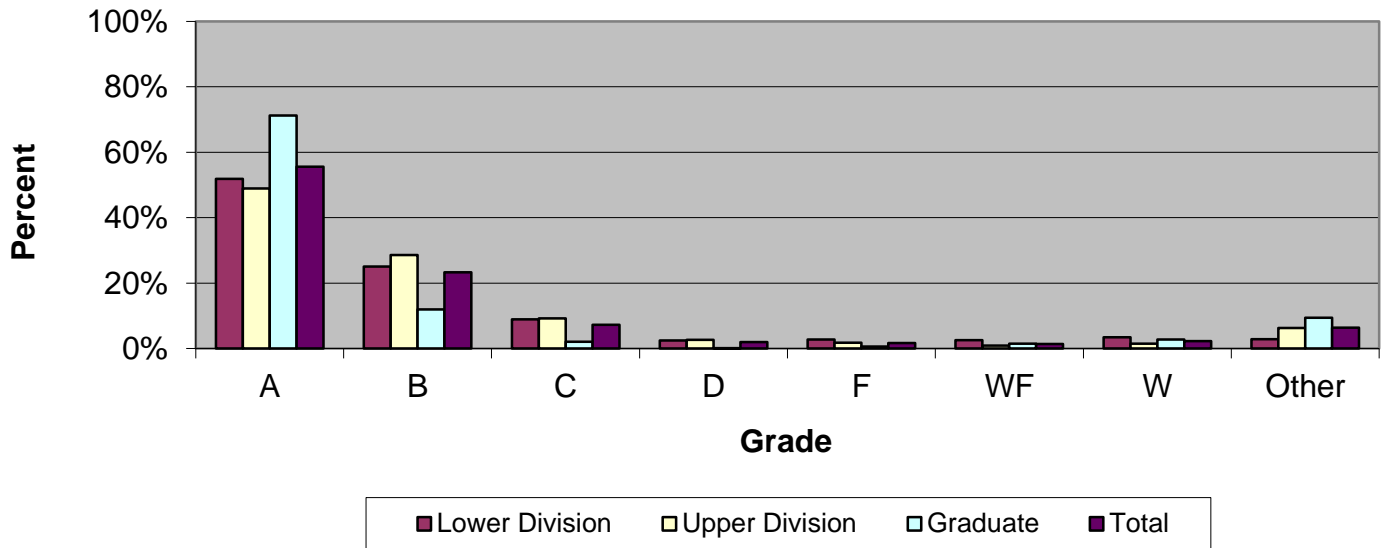


CSU Facts & Figures 2013: Grade Distribution

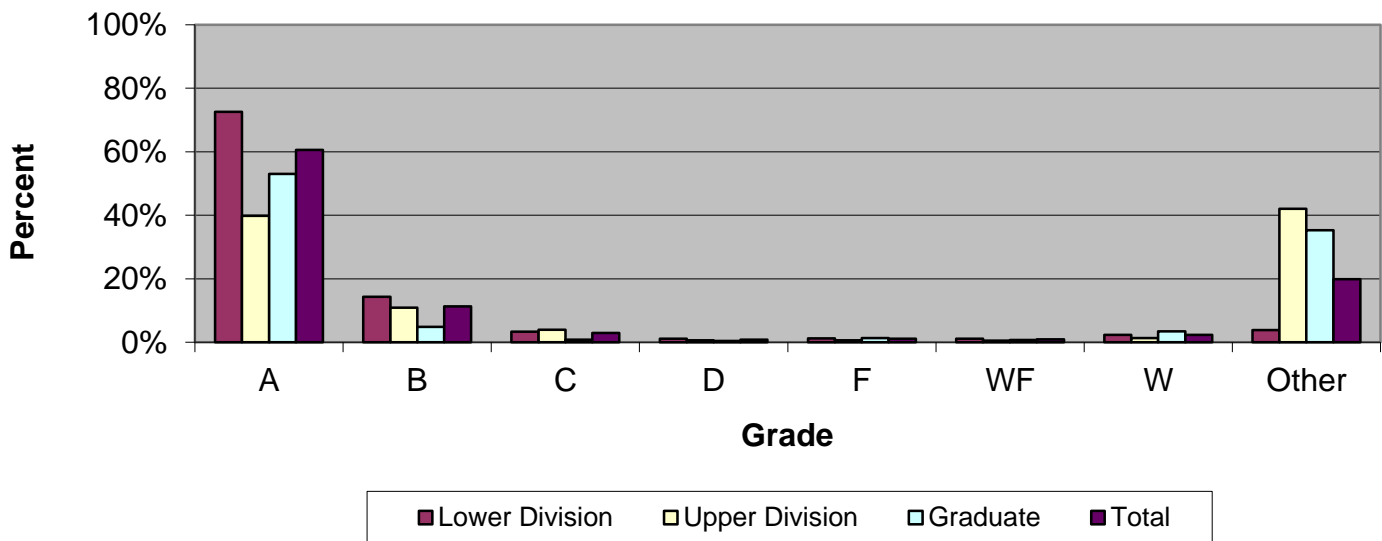
Grade Distribution of Full-Time Faculty for 2012-13 College of Education & Health Professions



Grade Distribution by Level of Instruction - College of Education & Health Professions

Full-Time Faculty	A's	B's	C's	D's	F's	WF's	W's	Other	Total
<i>2009-2010</i>									
Lower Division	1,314	693	257	71	56	57	97	16	2,561
Percent	51.3%	27.1%	10.0%	2.8%	2.2%	2.2%	3.8%	0.6%	100.0%
Upper Division	1,659	1,315	329	76	38	32	35	418	3,902
Percent	42.5%	33.7%	8.4%	1.9%	1.0%	0.8%	0.9%	10.7%	100.0%
Graduate	2,272	291	61	10	15	43	102	479	3,273
Percent	69.4%	8.9%	1.9%	0.3%	0.5%	1.3%	3.1%	14.6%	100.0%
Total	5,245	2,299	647	157	109	132	234	913	9,736
Percent	53.9%	23.6%	6.6%	1.6%	1.1%	1.4%	2.4%	9.4%	100.0%
<i>2010-2011</i>									
Lower Division	1,171	575	199	58	68	72	61	12	2,216
Percent	52.8%	25.9%	9.0%	2.6%	3.1%	3.2%	2.8%	0.5%	100.0%
Upper Division	1,774	1,057	267	74	52	36	49	421	3,730
Percent	47.6%	28.3%	7.2%	2.0%	1.4%	1.0%	1.3%	11.3%	100.0%
Graduate	1,879	256	63	10	14	31	59	376	2,688
Percent	69.9%	9.5%	2.3%	0.4%	0.5%	1.2%	2.2%	14.0%	100.0%
Total	4,824	1,888	529	142	134	139	169	809	8,634
Percent	55.9%	21.9%	6.1%	1.6%	1.6%	1.6%	2.0%	9.4%	100.0%
<i>2011-2012</i>									
Lower Division	1,065	577	211	59	51	55	64	36	2,118
Percent	50.3%	27.2%	10.0%	2.8%	2.4%	2.6%	3.0%	1.7%	100.0%
Upper Division	1,800	1,063	330	101	55	23	35	223	3,630
Percent	49.6%	29.3%	9.1%	2.8%	1.5%	0.6%	1.0%	6.1%	100.0%
Graduate	1,992	324	54	5	32	24	60	320	2,811
Percent	70.9%	11.5%	1.9%	0.2%	1.1%	0.9%	2.1%	11.4%	100.0%
Total	4,857	1,964	595	165	138	102	159	579	8,559
Percent	56.7%	22.9%	7.0%	1.9%	1.6%	1.2%	1.9%	6.8%	100.0%
<i>2012-2013</i>									
Lower Division	965	466	166	47	51	48	65	53	1,861
Percent	51.9%	25.0%	8.9%	2.5%	2.7%	2.6%	3.5%	2.8%	100.0%
Upper Division	2,044	1,194	385	113	77	38	63	265	4,179
Percent	48.9%	28.6%	9.2%	2.7%	1.8%	0.9%	1.5%	6.3%	100.0%
Graduate	1,569	264	47	4	14	34	62	207	2,201
Percent	71.3%	12.0%	2.1%	0.2%	0.6%	1.5%	2.8%	9.4%	100.0%
Total	4,578	1,924	598	164	142	120	190	525	8,241
Percent	55.6%	23.3%	7.3%	2.0%	1.7%	1.5%	2.3%	6.4%	100.0%

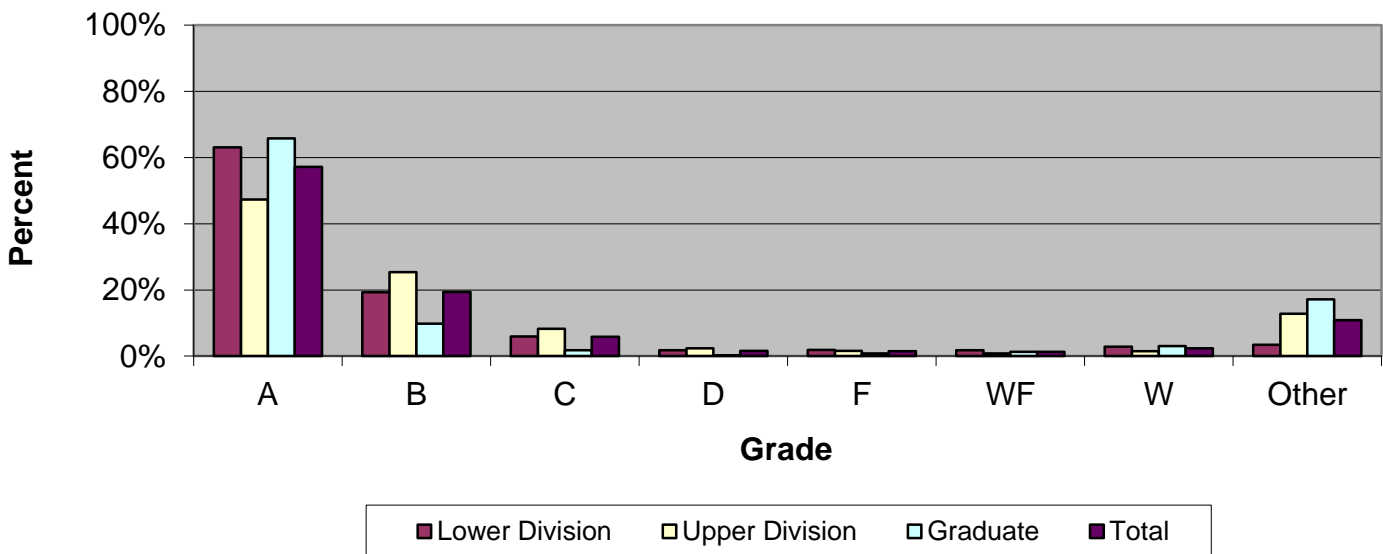
Grade Distribution of Part-Time Faculty for 2012-13
College of Education & Health Professions



Grade Distribution by Level of Instruction - College of Education & Health Professions

Part-Time Faculty	A's	B's	C's	D's	F's	WF's	W's	Other	Total
<i>2009-2010</i>									
Lower Division	1,849	283	112	38	61	81	129	38	2,591
Percent	71.4%	10.9%	4.3%	1.5%	2.4%	3.1%	5.0%	1.5%	100.0%
Upper Division	264	72	33	8	5	3	6	286	677
Percent	39.0%	10.6%	4.9%	1.2%	0.7%	0.4%	0.9%	42.2%	100.0%
Graduate	681	128	22	2	5	11	33	110	992
Percent	68.6%	12.9%	2.2%	0.2%	0.5%	1.1%	3.3%	11.1%	100.0%
Total	2,794	483	167	48	71	95	168	434	4,260
Percent	65.6%	11.3%	3.9%	1.1%	1.7%	2.2%	3.9%	10.2%	100.0%
<i>2010-2011</i>									
Lower Division	1,754	288	87	28	66	81	68	38	2,410
Percent	72.8%	12.0%	3.6%	1.2%	2.7%	3.4%	2.8%	1.6%	100.0%
Upper Division	286	144	81	25	11	7	13	291	858
Percent	33.3%	16.8%	9.4%	2.9%	1.3%	0.8%	1.5%	33.9%	100.0%
Graduate	870	135	29	6	16	13	34	212	1,315
Percent	66.2%	10.3%	2.2%	0.5%	1.2%	1.0%	2.6%	16.1%	100.0%
Total	2,910	567	197	59	93	101	115	541	4,583
Percent	63.5%	12.4%	4.3%	1.3%	2.0%	2.2%	2.5%	11.8%	100.0%
<i>2011-2012</i>									
Lower Division	1,606	363	87	20	42	47	73	87	2,325
Percent	69.1%	15.6%	3.7%	0.9%	1.8%	2.0%	3.1%	3.7%	100.0%
Upper Division	378	150	95	20	7	5	12	465	1,132
Percent	33.4%	13.3%	8.4%	1.8%	0.6%	0.4%	1.1%	41.1%	100.0%
Graduate	664	87	26	3	12	11	26	230	1,059
Percent	62.7%	8.2%	2.5%	0.3%	1.1%	1.0%	2.5%	21.7%	100.0%
Total	2,648	600	208	43	61	63	111	782	4,516
Percent	58.6%	13.3%	4.6%	1.0%	1.4%	1.4%	2.5%	17.3%	100.0%
<i>2012-2013</i>									
Lower Division	1,587	314	74	24	27	25	51	85	2,187
Percent	72.6%	14.4%	3.4%	1.1%	1.2%	1.1%	2.3%	3.9%	100.0%
Upper Division	368	101	37	6	6	5	12	389	924
Percent	39.8%	10.9%	4.0%	0.6%	0.6%	0.5%	1.3%	42.1%	100.0%
Graduate	504	46	8	4	13	7	33	335	950
Percent	53.1%	4.8%	0.8%	0.4%	1.4%	0.7%	3.5%	35.3%	100.0%
Total	2,459	461	119	34	46	37	96	809	4,061
Percent	60.6%	11.4%	2.9%	0.8%	1.1%	0.9%	2.4%	19.9%	100.0%

Grade Distribution of All Faculty for 2012-13
College of Education & Health Professions



Grade Distribution by Level of Instruction - College of Education & Health Professions

All Faculty	A's	B's	C's	D's	F's	WF's	W's	Other	Total
<i>2009-2010</i>									
Lower Division	3,163	976	369	109	117	138	226	54	5,152
Percent	61.4%	18.9%	7.2%	2.1%	2.3%	2.7%	4.4%	1.0%	100.0%
Upper Division	1,923	1,387	362	84	43	35	41	704	4,579
Percent	42.0%	30.3%	7.9%	1.8%	0.9%	0.8%	0.9%	15.4%	100.0%
Graduate	2,953	419	83	12	20	54	135	589	4,265
Percent	69.2%	9.8%	1.9%	0.3%	0.5%	1.3%	3.2%	13.8%	100.0%
Total	8,039	2,782	814	205	180	227	402	1,347	13,996
Percent	57.4%	19.9%	5.8%	1.5%	1.3%	1.6%	2.9%	9.6%	100.0%
<i>2010-2011</i>									
Lower Division	2,925	863	286	86	134	153	129	50	4,626
Percent	63.2%	18.7%	6.2%	1.9%	2.9%	3.3%	2.8%	1.1%	100.0%
Upper Division	2,060	1,201	348	99	63	43	62	712	4,588
Percent	44.9%	26.2%	7.6%	2.2%	1.4%	0.9%	1.4%	15.5%	100.0%
Graduate	2,749	391	92	16	30	44	93	588	4,003
Percent	68.7%	9.8%	2.3%	0.4%	0.7%	1.1%	2.3%	14.7%	100.0%
Total	7,734	2,455	726	201	227	240	284	1,350	13,217
Percent	58.5%	18.6%	5.5%	1.5%	1.7%	1.8%	2.1%	10.2%	100.0%
<i>2011-2012</i>									
Lower Division	2,671	940	298	79	93	102	137	123	4,443
Percent	60.1%	21.2%	6.7%	1.8%	2.1%	2.3%	3.1%	2.8%	100.0%
Upper Division	2,178	1,213	425	121	62	28	47	688	4,762
Percent	45.7%	25.5%	8.9%	2.5%	1.3%	0.6%	1.0%	14.4%	100.0%
Graduate	2,656	411	80	8	44	35	86	550	3,870
Percent	68.6%	10.6%	2.1%	0.2%	1.1%	0.9%	2.2%	14.2%	100.0%
Total	7,505	2,564	803	208	199	165	270	1,361	13,075
Percent	57.4%	19.6%	6.1%	1.6%	1.5%	1.3%	2.1%	10.4%	100.0%
<i>2012-2013</i>									
Lower Division	2,552	780	240	71	78	73	116	138	4,048
Percent	63.0%	19.3%	5.9%	1.8%	1.9%	1.8%	2.9%	3.4%	100.0%
Upper Division	2,412	1,295	422	119	83	43	75	654	5,103
Percent	47.3%	25.4%	8.3%	2.3%	1.6%	0.8%	1.5%	12.8%	100.0%
Graduate	2,073	310	55	8	27	41	95	542	3,151
Percent	65.8%	9.8%	1.7%	0.3%	0.9%	1.3%	3.0%	17.2%	100.0%
Total	7,037	2,385	717	198	188	157	286	1,334	12,302
Percent	57.2%	19.4%	5.8%	1.6%	1.5%	1.3%	2.3%	10.8%	100.0%