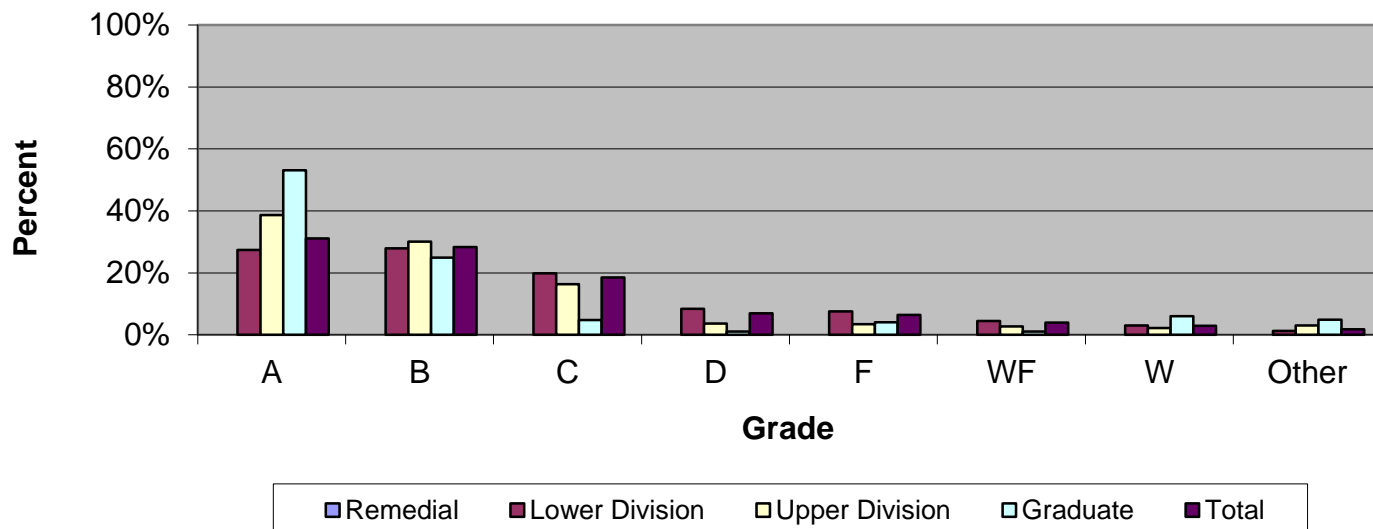


# CSU Facts & Figures 2013: Grade Distribution

## Grade Distribution of Full-Time Faculty for 2012-13 College of Letters & Sciences

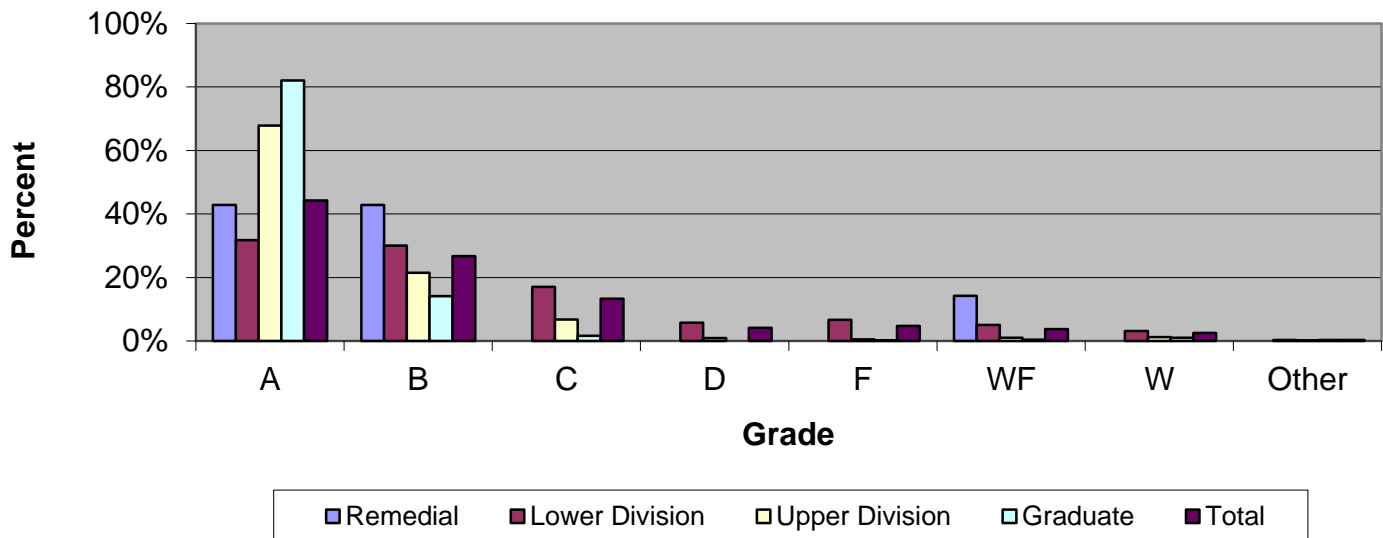


### Grade Distribution by Level of Instruction - College of Letters & Sciences

Full-Time Faculty	A's	B's	C's	D's	F's	WF's	W's	Other	Total
<i>2009-2010</i>									
Remedial	0	0	0	0	0	0	7	182	189
Percent	0.0%	0.0%	0.0%	0.0%	0.0%	0.0%	3.7%	96.3%	100.0%
Lower Division	4,299	4,461	3,589	1,649	1,514	826	785	67	17,190
Percent	25.0%	26.0%	20.9%	9.6%	8.8%	4.8%	4.6%	0.4%	100.0%
Upper Division	1,976	1,599	912	271	196	150	200	131	5,435
Percent	36.4%	29.4%	16.8%	5.0%	3.6%	2.8%	3.7%	2.4%	100.0%
Graduate	430	172	50	5	4	11	29	21	722
Percent	59.6%	23.8%	6.9%	0.7%	0.6%	1.5%	4.0%	2.9%	100.0%
<i>Total</i>	6,705	6,232	4,551	1,925	1,714	987	1,021	401	23,536
Percent	28.5%	26.5%	19.3%	8.2%	7.3%	4.2%	4.3%	1.7%	100.0%
<i>2010-2011</i>									
Remedial	0	0	0	0	0	0	3	68	71
Percent	0.0%	0.0%	0.0%	0.0%	0.0%	0.0%	4.2%	95.8%	100.0%
Lower Division	4,504	4,841	3,688	1,786	1,699	1,055	635	114	18,322
Percent	24.6%	26.4%	20.1%	9.7%	9.3%	5.8%	3.5%	0.6%	100.0%
Upper Division	1,770	1,601	927	262	267	180	142	193	5,342
Percent	33.1%	30.0%	17.4%	4.9%	5.0%	3.4%	2.7%	3.6%	100.0%
Graduate	462	152	40	6	17	16	29	32	754
Percent	61.3%	20.2%	5.3%	0.8%	2.3%	2.1%	3.8%	4.2%	100.0%
<i>Total</i>	6,736	6,594	4,655	2,054	1,983	1,251	809	407	24,489
Percent	27.5%	26.9%	19.0%	8.4%	8.1%	5.1%	3.3%	1.7%	100.0%
<i>2011-2012</i>									
Remedial	0	0	0	0	0	0	0	0	0
Percent									
Lower Division	4,720	4,904	3,835	1,827	1,800	938	679	213	18,916
Percent	25.0%	25.9%	20.3%	9.7%	9.5%	5.0%	3.6%	1.1%	100.0%
Upper Division	1,971	1,625	995	269	262	175	156	187	5,640
Percent	34.9%	28.8%	17.6%	4.8%	4.6%	3.1%	2.8%	3.3%	100.0%
Graduate	385	169	36	8	20	24	26	23	691
Percent	55.7%	24.5%	5.2%	1.2%	2.9%	3.5%	3.8%	3.3%	100.0%
<i>Total</i>	7,076	6,698	4,866	2,104	2,082	1,137	861	423	25,247
Percent	28.0%	26.5%	19.3%	8.3%	8.2%	4.5%	3.4%	1.7%	100.0%
<i>2012-2013</i>									
Remedial	0	0	0	0	0	0	0	0	0
Percent									
Lower Division	4,721	4,814	3,430	1,455	1,304	776	522	210	17,232
Percent	27.4%	27.9%	19.9%	8.4%	7.6%	4.5%	3.0%	1.2%	100.0%
Upper Division	2,322	1,809	983	216	204	161	130	181	6,006
Percent	38.7%	30.1%	16.4%	3.6%	3.4%	2.7%	2.2%	3.0%	100.0%
Graduate	433	203	39	9	33	9	49	40	815
Percent	53.1%	24.9%	4.8%	1.1%	4.0%	1.1%	6.0%	4.9%	100.0%
<i>Total</i>	7,476	6,826	4,452	1,680	1,541	946	701	431	24,053

Percent	31.1%	28.4%	18.5%	7.0%	6.4%	3.9%	2.9%	1.8%	100.0%
---------	-------	-------	-------	------	------	------	------	------	--------

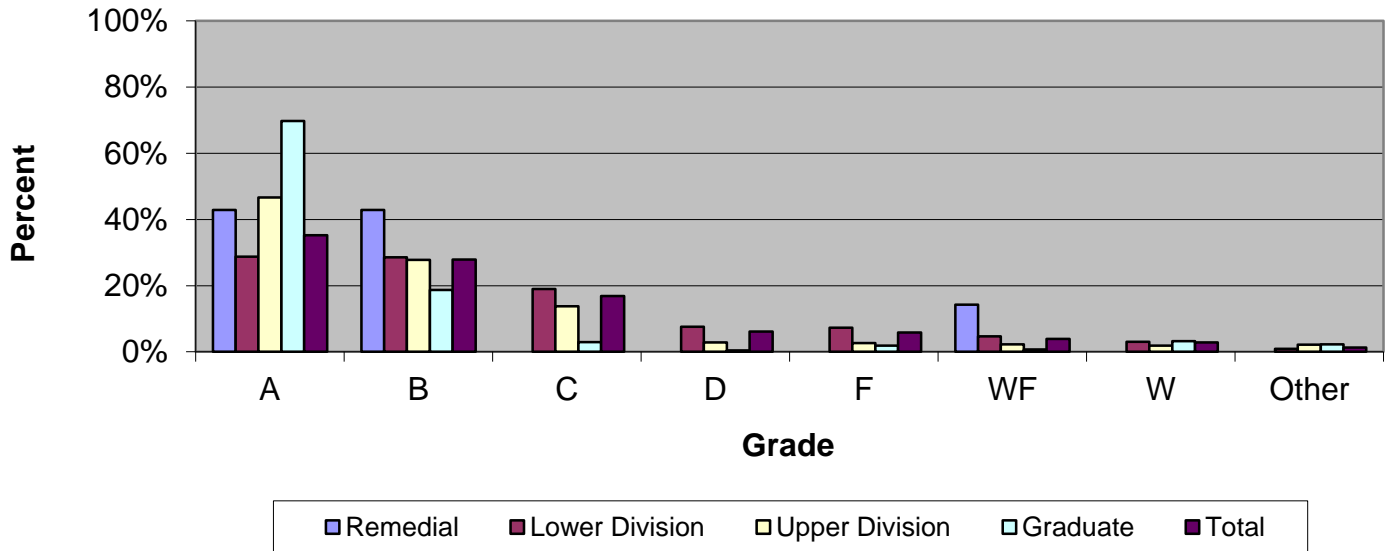
### Grade Distribution of Part-Time Faculty for 2012-13 College of Letters & Sciences



Grade Distribution by Level of Instruction - College of Letters & Sciences									
Part-Time Faculty	A's	B's	C's	D's	F's	WF's	W's	Other	Total
<i>2009-2010</i>									
Remedial	0	0	0	0	0	0	3	150	153
Percent	0.0%	0.0%	0.0%	0.0%	0.0%	0.0%	2.0%	98.0%	100.0%
Lower Division	1,930	1,612	976	415	379	345	301	38	5,996
Percent	32.2%	26.9%	16.3%	6.9%	6.3%	5.8%	5.0%	0.6%	100.0%
Upper Division	1,746	492	106	11	11	7	20	2	2,395
Percent	72.9%	20.5%	4.4%	0.5%	0.5%	0.3%	0.8%	0.1%	100.0%
Graduate	920	350	27	4	5	15	29	5	1,355
Percent	67.9%	25.8%	2.0%	0.3%	0.4%	1.1%	2.1%	0.4%	100.0%
<b>Total</b>	<b>4,596</b>	<b>2,454</b>	<b>1,109</b>	<b>430</b>	<b>395</b>	<b>367</b>	<b>353</b>	<b>195</b>	<b>9,899</b>
Percent	46.4%	24.8%	11.2%	4.3%	4.0%	3.7%	3.6%	2.0%	100.0%
<i>2010-2011</i>									
Remedial	3	3	2	0	0	0	0	8	16
Percent	18.8%	18.8%	12.5%	0.0%	0.0%	0.0%	0.0%	50.0%	100.0%
Lower Division	2,111	1,608	1,013	448	403	314	204	37	6,138
Percent	34.4%	26.2%	16.5%	7.3%	6.6%	5.1%	3.3%	0.6%	100.0%
Upper Division	2,035	624	178	34	20	36	19	14	2,960
Percent	68.8%	21.1%	6.0%	1.1%	0.7%	1.2%	0.6%	0.5%	100.0%
Graduate	1,007	299	25	2	5	10	17	17	1,382
Percent	72.9%	21.6%	1.8%	0.1%	0.4%	0.7%	1.2%	1.2%	100.0%
<b>Total</b>	<b>5,156</b>	<b>2,534</b>	<b>1,218</b>	<b>484</b>	<b>428</b>	<b>360</b>	<b>240</b>	<b>76</b>	<b>10,496</b>
Percent	49.1%	24.1%	11.6%	4.6%	4.1%	3.4%	2.3%	0.7%	100.0%
<i>2011-2012</i>									
Remedial	0	0	0	0	0	0	0	0	0
Percent	0.0%	0.0%	0.0%	0.0%	0.0%	0.0%	0.0%	0.0%	0.0%
Lower Division	2,207	1,826	1,101	515	513	331	214	33	6,740
Percent	32.7%	27.1%	16.3%	7.6%	7.6%	4.9%	3.2%	0.5%	100.0%
Upper Division	1,950	584	218	44	32	33	35	3	2,899
Percent	67.3%	20.1%	7.5%	1.5%	1.1%	1.1%	1.2%	0.1%	100.0%
Graduate	1,111	164	23	1	2	6	22	2	1,331
Percent	83.5%	12.3%	1.7%	0.1%	0.2%	0.5%	1.7%	0.2%	100.0%
<b>Total</b>	<b>5,268</b>	<b>2,574</b>	<b>1,342</b>	<b>560</b>	<b>547</b>	<b>370</b>	<b>271</b>	<b>38</b>	<b>10,970</b>
Percent	48.0%	23.5%	12.2%	5.1%	5.0%	3.4%	2.5%	0.3%	100.0%
<i>2012-2013</i>									
Remedial	3	3	0	0	0	1	0	0	7
Percent	42.9%	42.9%	0.0%	0.0%	0.0%	14.3%	0.0%	0.0%	100.0%
Lower Division	2,410	2,281	1,289	434	503	387	243	27	7,574
Percent	31.8%	30.1%	17.0%	5.7%	6.6%	5.1%	3.2%	0.4%	100.0%
Upper Division	1,520	482	151	21	13	23	28	2	2,240
Percent	67.9%	21.5%	6.7%	0.9%	0.6%	1.0%	1.3%	0.1%	100.0%
Graduate	902	155	18	0	3	5	12	4	1,099
Percent	82.1%	14.1%	1.6%	0.0%	0.3%	0.5%	1.1%	0.4%	100.0%
<b>Total</b>	<b>4,835</b>	<b>2,921</b>	<b>1,458</b>	<b>455</b>	<b>519</b>	<b>416</b>	<b>283</b>	<b>33</b>	<b>10,920</b>

Percent	44.3%	26.7%	13.4%	4.2%	4.8%	3.8%	2.6%	0.3%	100.0%
---------	-------	-------	-------	------	------	------	------	------	--------

### Grade Distribution of All Faculty for 2012-13 College of Letters & Sciences



Grade Distribution by Level of Instruction - College of Letters & Sciences									
All Faculty	A's	B's	C's	D's	F's	WF's	W's	Other	Total
<i>2009-2010</i>									
Remedial	0	0	0	0	0	0	10	332	342
Percent							2.9%	97.1%	100.0%
Lower Division	6,229	6,073	4,565	2,064	1,893	1,171	1,086	105	23,186
Percent	26.9%	26.2%	19.7%	8.9%	8.2%	5.1%	4.7%	0.5%	100.0%
Upper Division	3,722	2,091	1,018	282	207	157	220	133	7,830
Percent	47.5%	26.7%	13.0%	3.6%	2.6%	2.0%	2.8%	1.7%	100.0%
Graduate	1,350	522	77	9	9	26	58	26	2,077
Percent	65.0%	25.1%	3.7%	0.4%	0.4%	1.3%	2.8%	1.3%	100.0%
<b>Total</b>	<b>11,301</b>	<b>8,686</b>	<b>5,660</b>	<b>2,355</b>	<b>2,109</b>	<b>1,354</b>	<b>1,374</b>	<b>596</b>	<b>33,435</b>
Percent	33.8%	26.0%	16.9%	7.0%	6.3%	4.0%	4.1%	1.8%	100.0%
<i>2010-2011</i>									
Remedial	3	3	2	0	0	0	3	76	87
Percent	3.4%	3.4%	2.3%	0.0%	0.0%	0.0%	3.4%	87.4%	100.0%
Lower Division	6,615	6,449	4,701	2,234	2,102	1,369	839	151	24,460
Percent	27.0%	26.4%	19.2%	9.1%	8.6%	5.6%	3.4%	0.6%	100.0%
Upper Division	3,805	2,225	1,105	296	287	216	161	207	8,302
Percent	45.8%	26.8%	13.3%	3.6%	3.5%	2.6%	1.9%	2.5%	100.0%
Graduate	1,469	451	65	8	22	26	46	49	2,136
Percent	68.8%	21.1%	3.0%	0.4%	1.0%	1.2%	2.2%	2.3%	100.0%
<b>Total</b>	<b>11,892</b>	<b>9,128</b>	<b>5,873</b>	<b>2,538</b>	<b>2,411</b>	<b>1,611</b>	<b>1,049</b>	<b>483</b>	<b>34,985</b>
Percent	34.0%	26.1%	16.8%	7.3%	6.9%	4.6%	3.0%	1.4%	100.0%
<i>2011-2012</i>									
Remedial	0	0	0	0	0	0	0	0	0
Percent	#DIV/0!	#DIV/0!	#DIV/0!	#DIV/0!	#DIV/0!	#DIV/0!	#DIV/0!	#DIV/0!	#DIV/0!
Lower Division	6,927	6,730	4,936	2,342	2,313	1,269	893	246	25,656
Percent	27.0%	26.2%	19.2%	9.1%	9.0%	4.9%	3.5%	1.0%	100.0%
Upper Division	3,921	2,209	1,213	313	294	208	191	190	8,539
Percent	45.9%	25.9%	14.2%	3.7%	3.4%	2.4%	2.2%	2.2%	100.0%
Graduate	1,496	333	59	9	22	30	48	25	2,022
Percent	74.0%	16.5%	2.9%	0.4%	1.1%	1.5%	2.4%	1.2%	100.0%
<b>Total</b>	<b>12,344</b>	<b>9,272</b>	<b>6,208</b>	<b>2,664</b>	<b>2,629</b>	<b>1,507</b>	<b>1,132</b>	<b>461</b>	<b>36,217</b>
Percent	34.1%	25.6%	17.1%	7.4%	7.3%	4.2%	3.1%	1.3%	100.0%
<i>2012-2013</i>									
Remedial	3	3	0	0	0	1	0	0	7
Percent	42.9%	42.9%	0.0%	0.0%	0.0%	14.3%	0.0%	0.0%	100.0%
Lower Division	7,131	7,095	4,719	1,889	1,807	1,163	765	237	24,806
Percent	28.7%	28.6%	19.0%	7.6%	7.3%	4.7%	3.1%	1.0%	100.0%
Upper Division	3,842	2,291	1,134	237	217	184	158	183	8,246
Percent	46.6%	27.8%	13.8%	2.9%	2.6%	2.2%	1.9%	2.2%	100.0%
Graduate	1,335	358	57	9	36	14	61	44	1,914
Percent	69.7%	18.7%	3.0%	0.5%	1.9%	0.7%	3.2%	2.3%	100.0%
<b>Total</b>	<b>12,311</b>	<b>9,747</b>	<b>5,910</b>	<b>2,135</b>	<b>2,060</b>	<b>1,362</b>	<b>984</b>	<b>464</b>	<b>34,973</b>

<b>Percent</b>	<b>35.2%</b>	<b>27.9%</b>	<b>16.9%</b>	<b>6.1%</b>	<b>5.9%</b>	<b>3.9%</b>	<b>2.8%</b>	<b>1.3%</b>	<b>100.0%</b>
----------------	--------------	--------------	--------------	-------------	-------------	-------------	-------------	-------------	---------------