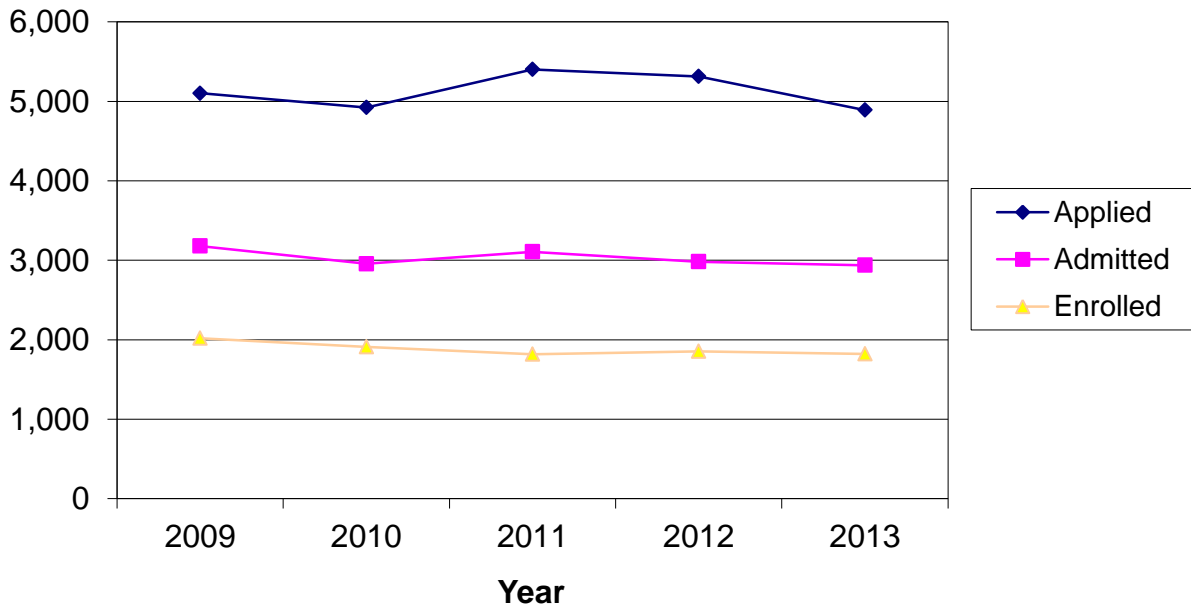


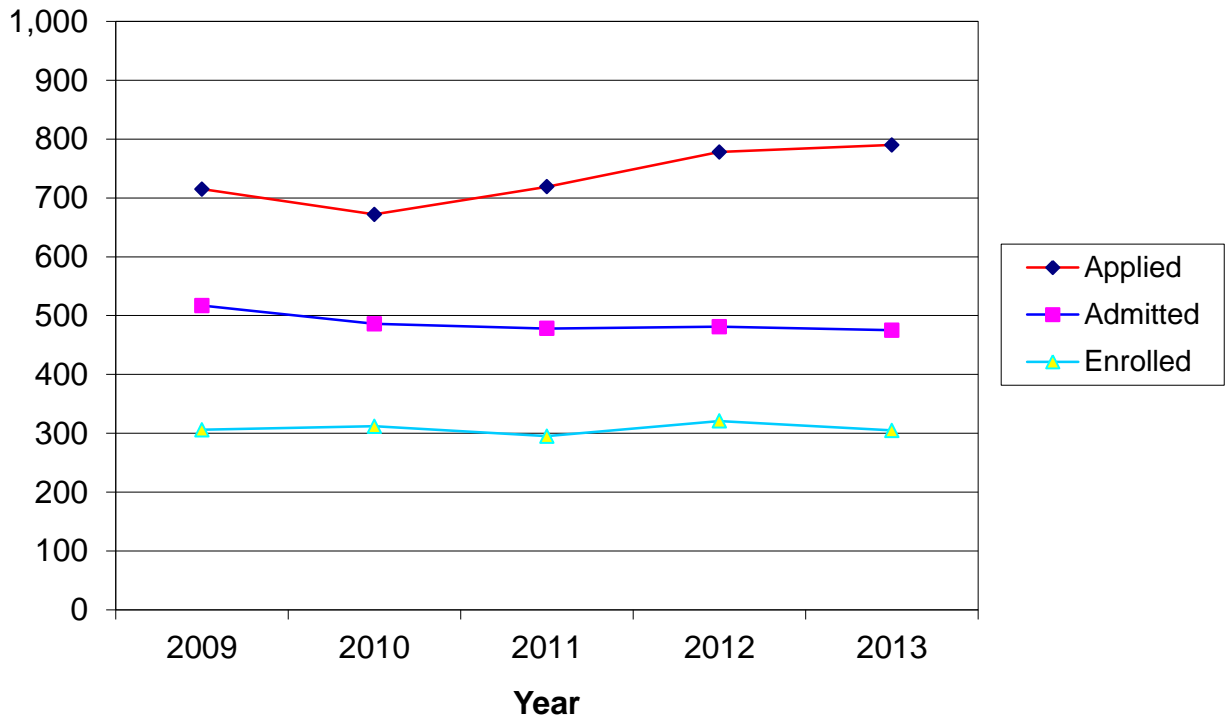
# CSU Facts & Figures 2013: Applications Received

## Undergraduate Applications Received



Undergraduate Applications Received							
	Fall 2009	Fall 2010	Fall 2011	Fall 2012	Fall 2013	4-Year # Change	4-Year % Change
<b>Applied</b>							
Entering Freshmen	3,439	3,440	3,832	3,664	3,154	-285	-8.3%
Transfer Students	1,539	1,364	1,442	1,463	1,511	-28	-1.8%
Other New Students	125	119	128	187	227	102	81.6%
<i>Total</i>	<b>5,103</b>	<b>4,923</b>	<b>5,402</b>	<b>5,314</b>	<b>4,892</b>	<b>-211</b>	<b>-4.1%</b>
<b>Accepted</b>							
Entering Freshmen	2,027	1,935	2,027	1,870	1,730	-297	-14.7%
Transfer Students	1,066	932	991	996	1,046	-20	-1.9%
Other New Students	86	89	89	116	162	76	88.4%
<i>Total</i>	<b>3,179</b>	<b>2,956</b>	<b>3,107</b>	<b>2,982</b>	<b>2,938</b>	<b>-241</b>	<b>-7.6%</b>
<b>Enrolled</b>							
Entering Freshmen	1,319	1,240	1,189	1,159	1,044	-275	-20.8%
Transfer Students	631	604	557	605	652	21	3.3%
Other New Students	70	68	73	91	126	56	80.0%
<i>Total</i>	<b>2,020</b>	<b>1,912</b>	<b>1,819</b>	<b>1,855</b>	<b>1,822</b>	<b>-198</b>	<b>-9.8%</b>

## Graduate Applications Received



Graduate Applications Received							
	Fall 2009	Fall 2010	Fall 2011	Fall 2012	Fall 2013	4-Year # Change	4-Year % Change
<b>Applied</b>							
Certificate	7	14	14	22	19	12	171.4%
Masters	602	564	587	646	671	69	11.5%
Specialist	101	59	83	60	85	-16	-15.8%
Doctorate	NA	33	31	42	10		
Non-Degree	5	2	4	8	5	0	0.0%
<i>Total</i>	715	672	719	778	790	75	10.5%
<b>Accepted</b>							
Certificate	6	9	12	13	10	4	66.7%
Masters	418	394	382	407	396	-22	-5.3%
Specialist	90	54	69	45	60	-30	-33.3%
Doctorate	NA	27	13	12	6		
Non-Degree	3	2	2	4	3	0	0.0%
<i>Total</i>	517	486	478	481	475	-42	-8.1%
<b>Enrolled</b>							
Certificate	6	8	11	11	5	-1	-16.7%
Masters	249	261	249	273	257	8	3.2%
Specialist	50	35	28	27	35	-15	-30.0%
Doctorate	NA	8	7	9	5		
Non-Degree	1	0	0	1	3	2	200.0%
<i>Total</i>	306	312	295	321	305	-1	-0.3%